

# Fórmulas de Compasso

2

4

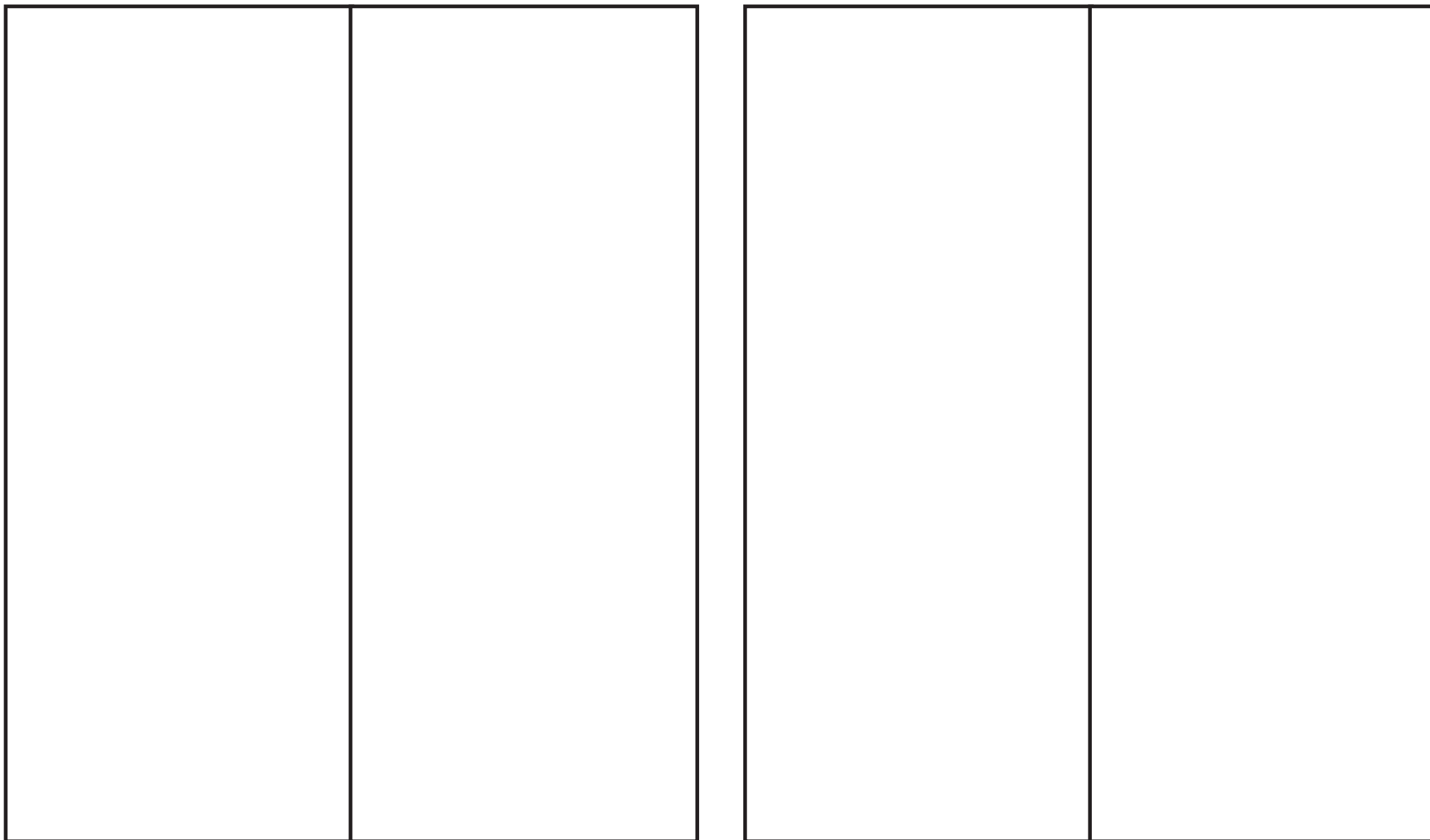
3

4

4

4

# Compasso binário



Two empty musical staves are provided for practice. Each staff is a large rectangle divided into two equal halves by a vertical line, representing two measures of music. The staves are currently blank.

**1**

**2**

**1**

**2**

# Compasso ternário

--	--	--

**1**

**2**

**3**

--	--	--	--

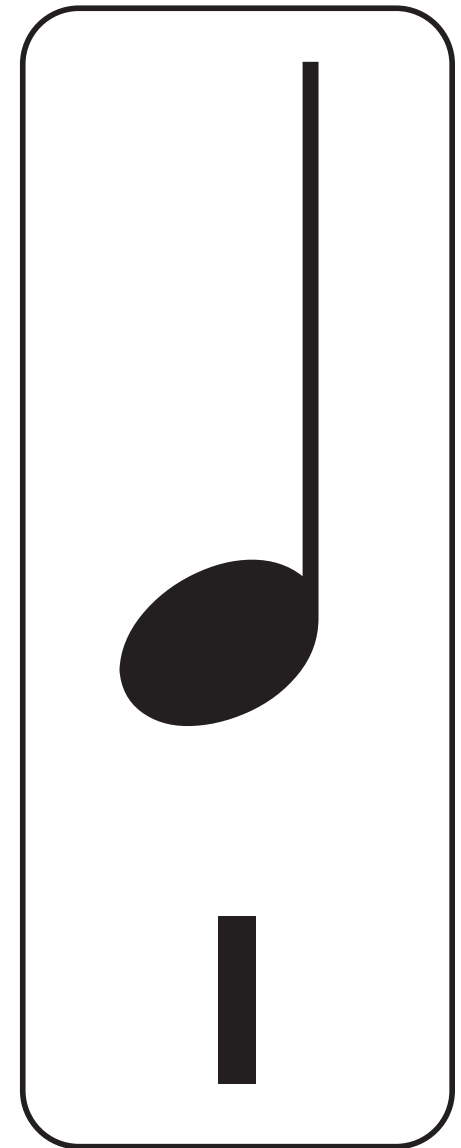
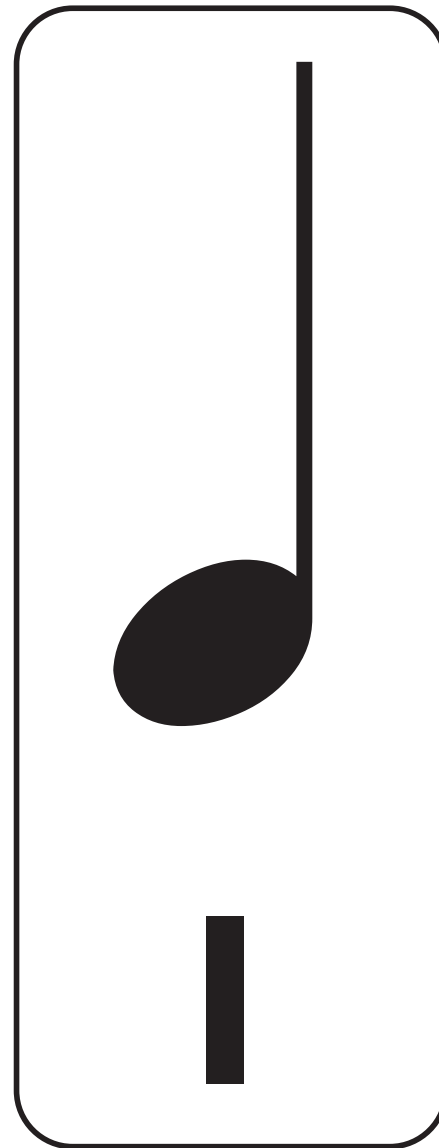
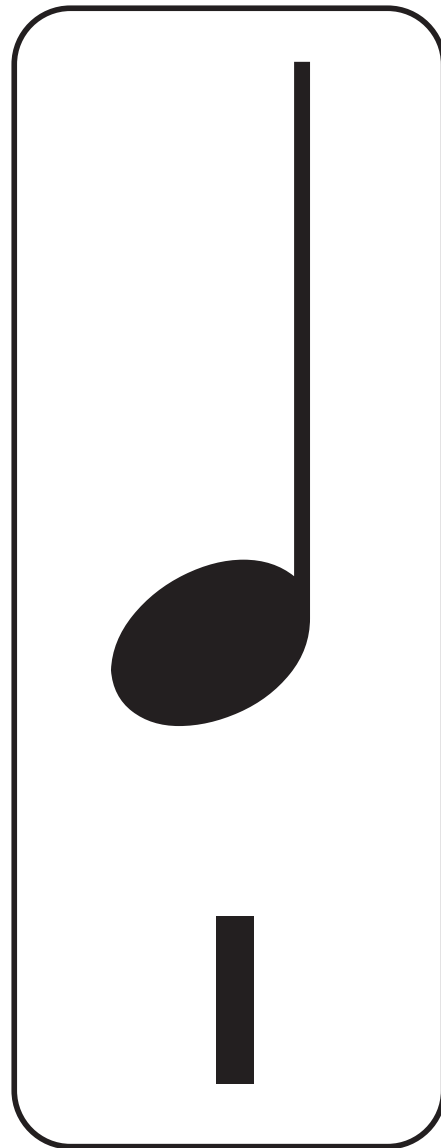
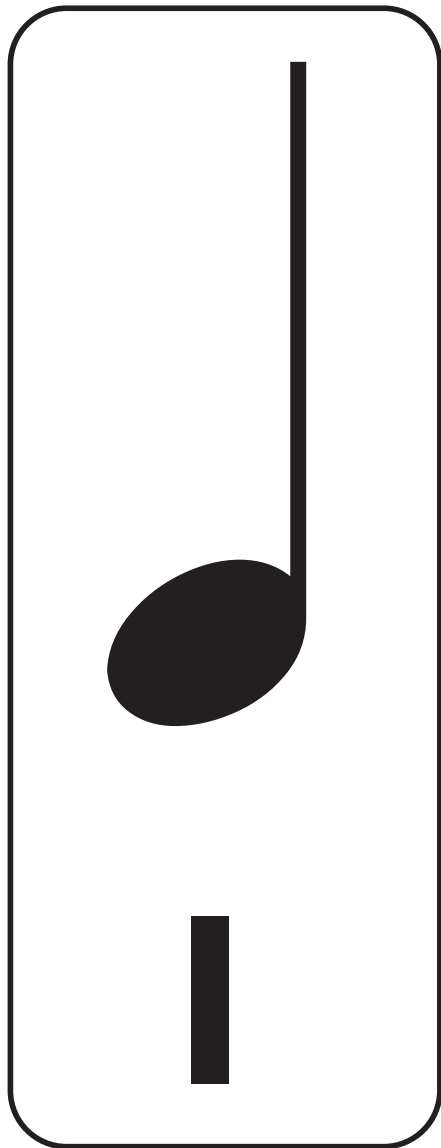
**1**

**2**

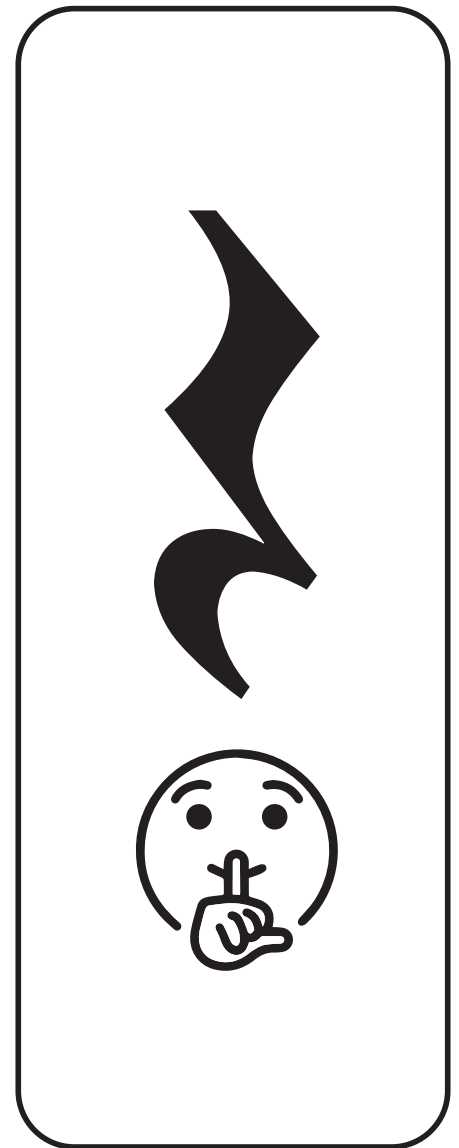
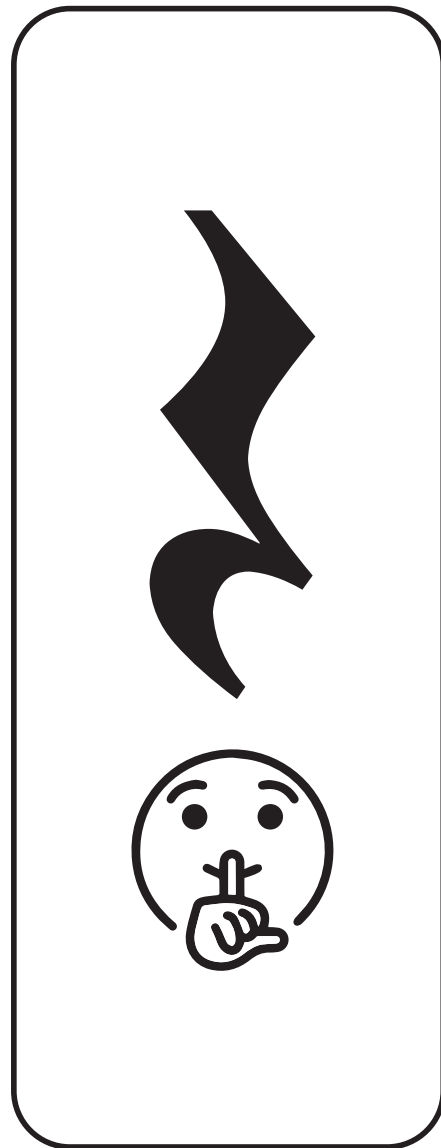
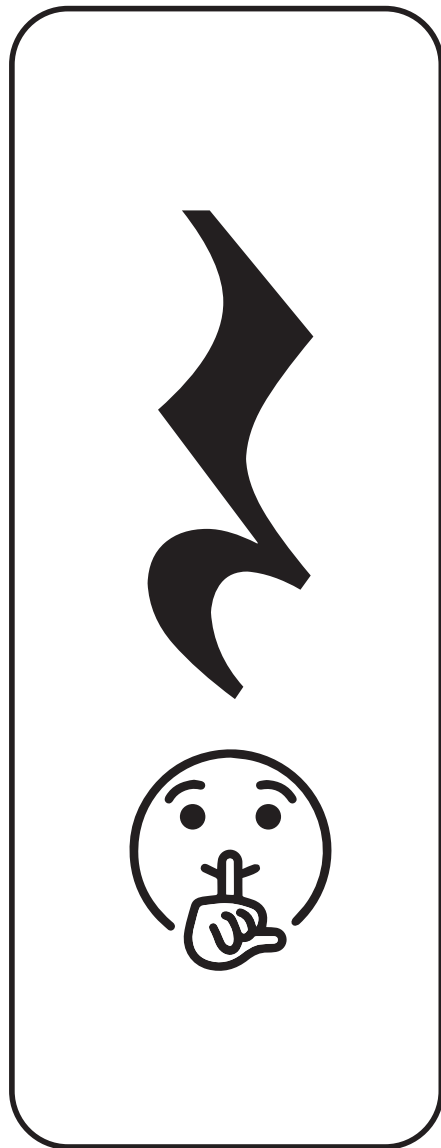
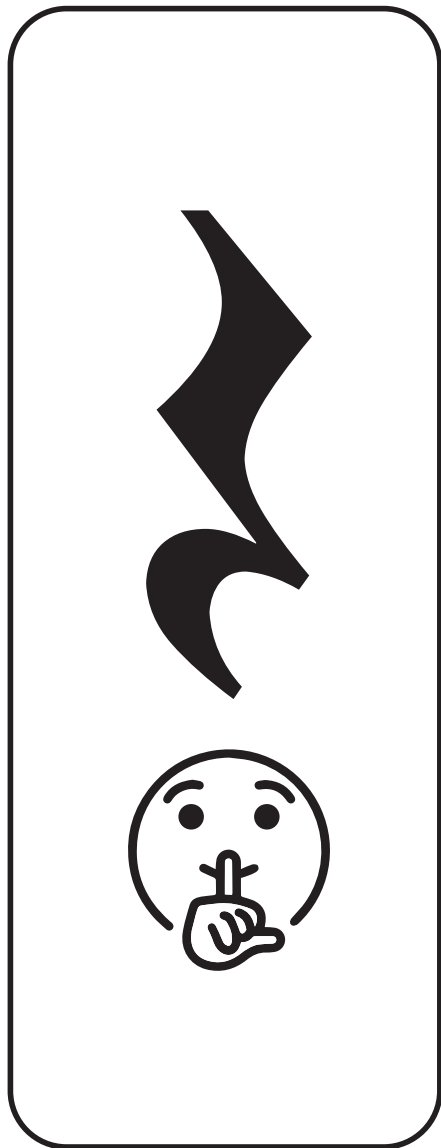
**3**

**4**

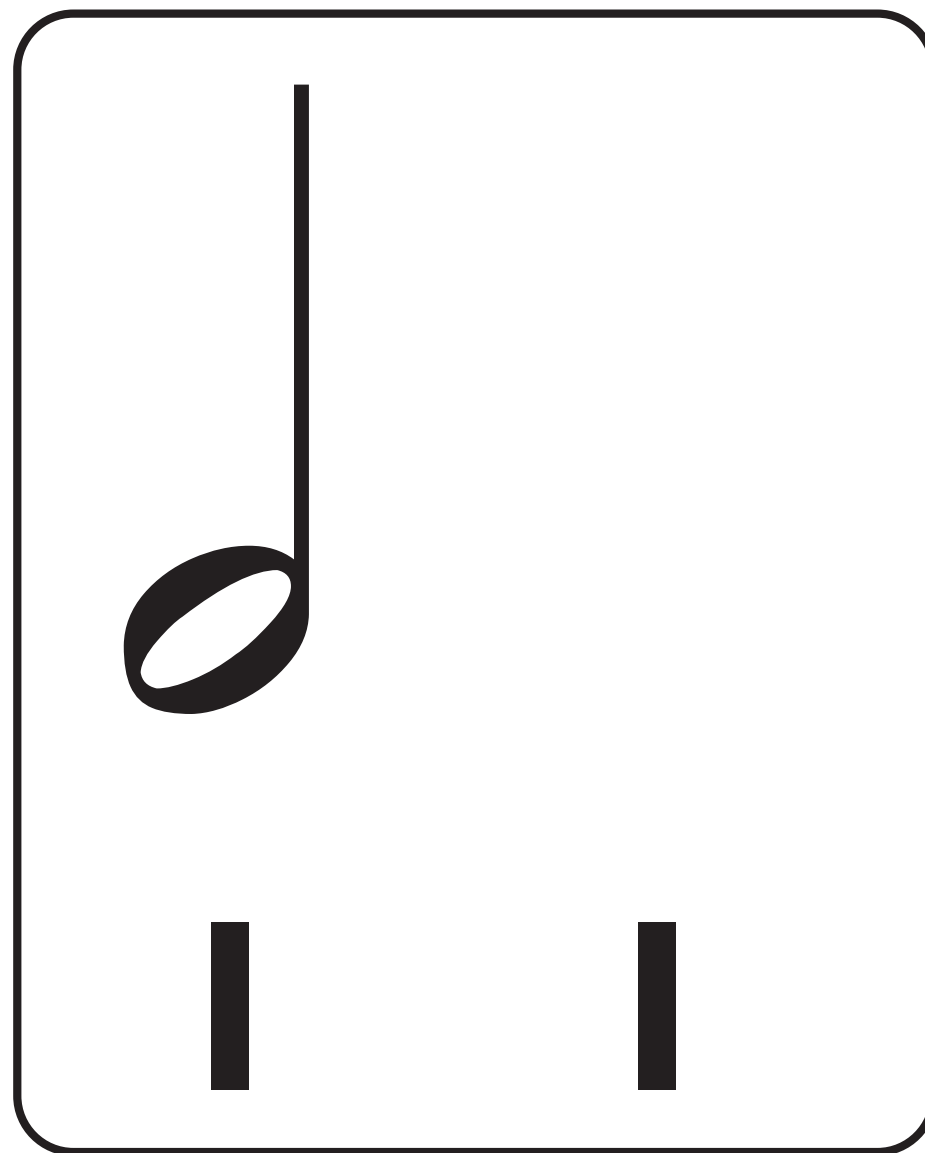
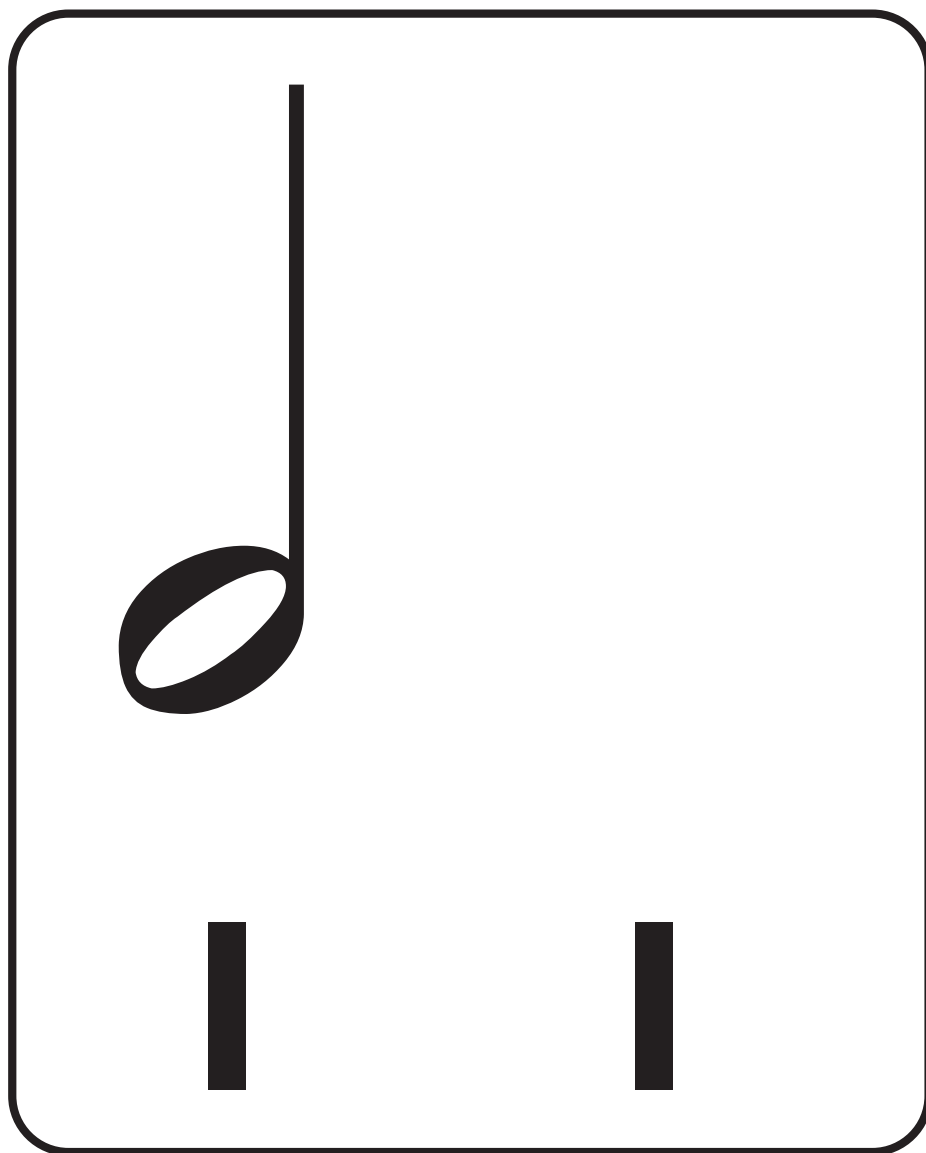
# Recorte as figuras



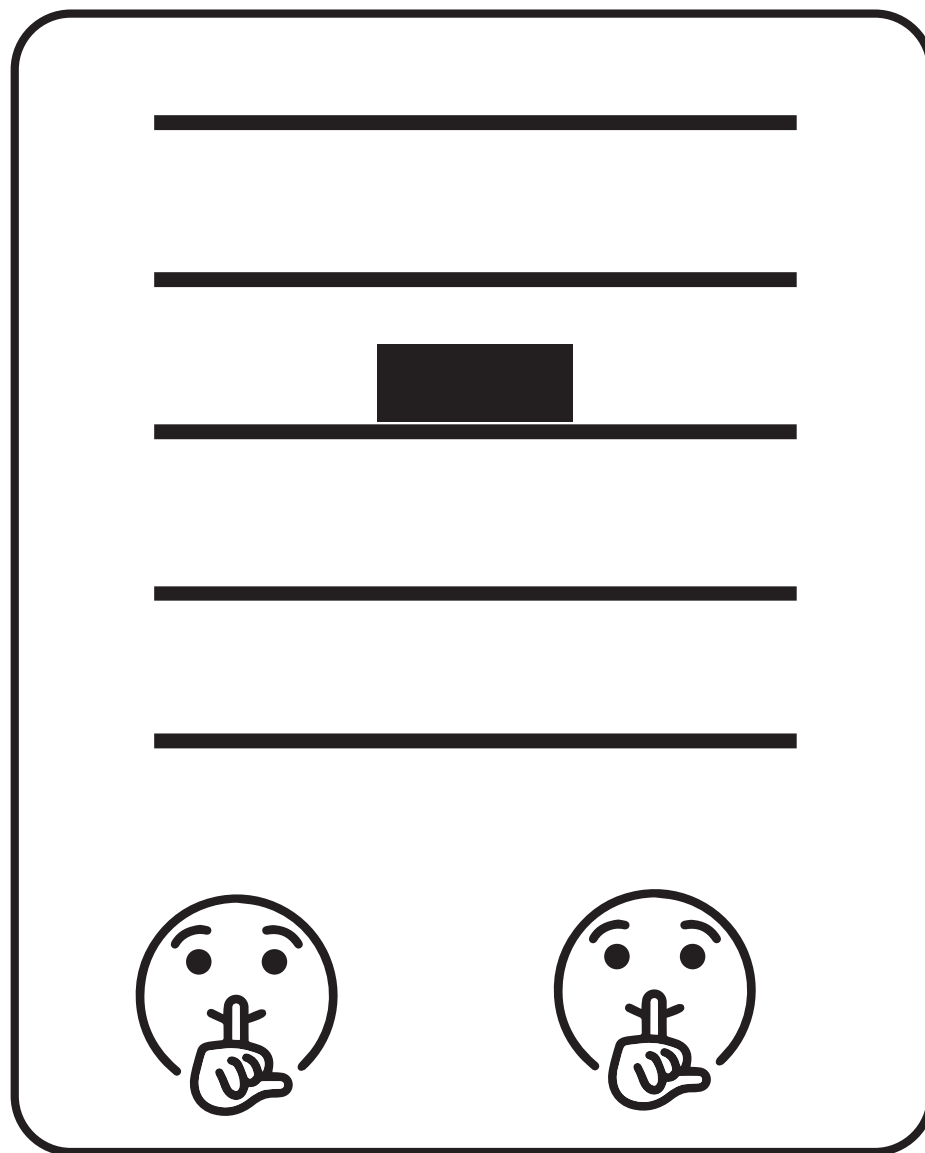
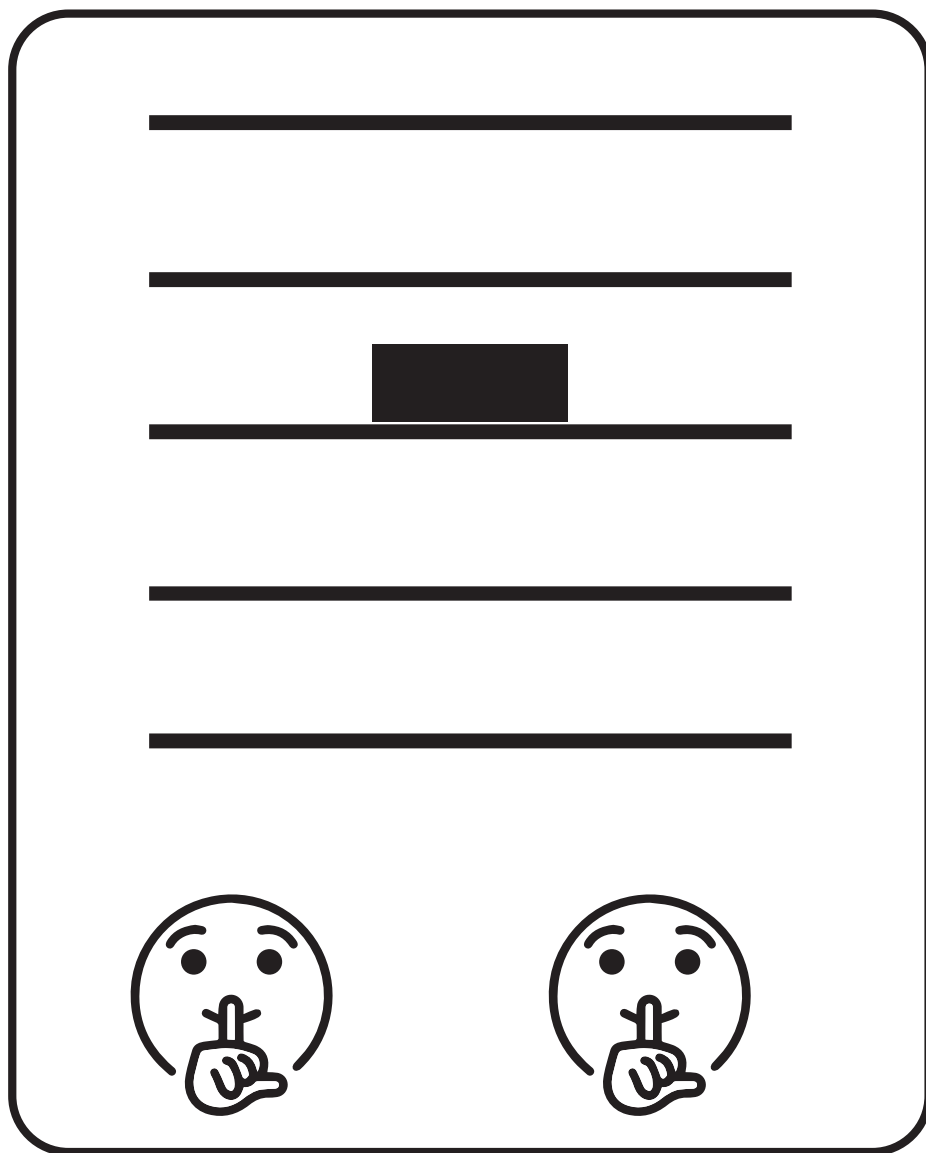
# Recorte as pausas



# Recorte as figuras



# Recorte as pausas





# Recorte as figuras



# Recorte as pausas

The worksheet contains five horizontal lines. The second line from the top has a black rectangular rest symbol centered on it. Below the lines, there are four identical icons of a person with their hand to their mouth, indicating a silent activity.

# Recorte as figuras



# Recorte as pausas

The worksheet contains five horizontal lines. The second line from the top has a black rectangular rest and a black circular rest. At the bottom, there are three identical icons of a face with a hand to its mouth, indicating where to cut out the rests.